

Clark County

Profile of Children and Youth with Special Health Care Needs

“Children with special health care needs are children who have, or are at increased risk for, chronic physical, developmental, behavioral, or emotional conditions and who also require health and related services of a type or amount beyond that required by children generally.”

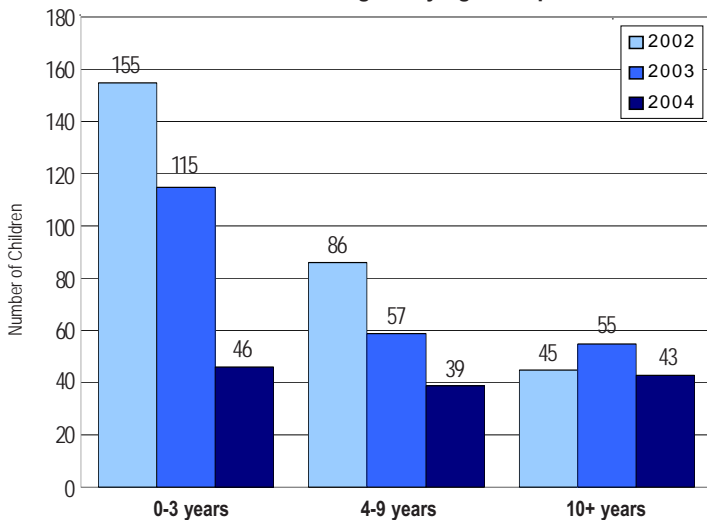
(Maternal and Child Health Bureau)

Population of Children 0-19 Years by Age Group and Year

Age Group	1990	2000	2003	2004
0-4 years	18,915	26,886	28,386	29,040
5-9 years	19,480	28,279	28,429	28,943
10-14 years	19,129	27,996	30,016	30,488
15-19 years	16,948	24,876	26,663	27,372
Total	74,472	108,037	113,493	115,843

Source: Intercensal/Postcensal Population Estimates, Office of Financial Management

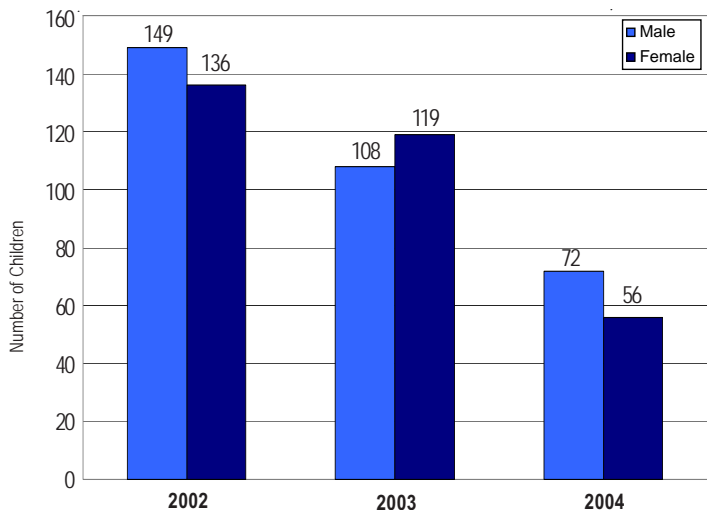
Number* of Children Served by Children with Special Health Care Needs Program by Age Group and Year



*Total number of children served: 2002=286, 2003=227, 2004=128. The number of children served by age and gender may not equal the total number of children served due to non-reporting of gender or age for some cases.

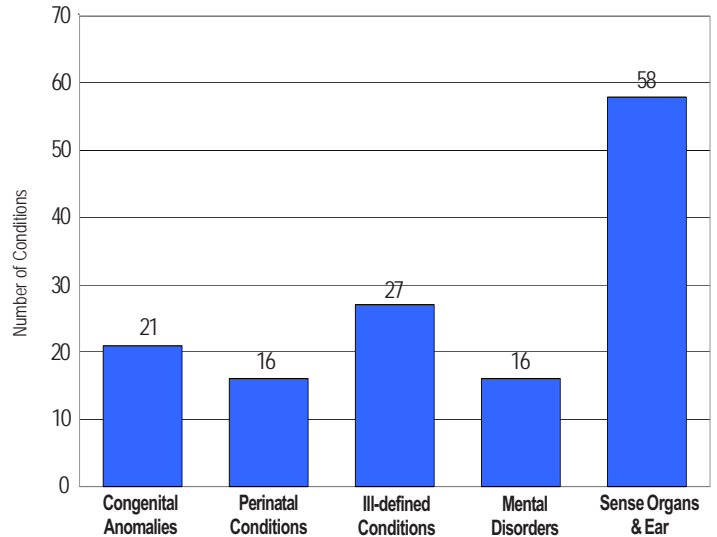
Source: Child Health Intake Forms, Children with Special Health Care Needs Program, Washington State Department of Health

Number* of Children Served by Children with Special Health Care Needs Program by Gender



Source: Child Health Intake Forms, Children with Special Health Care Needs Program, Washington State Department of Health

Leading Diagnostic Categories* among Children Served by the Children with Special Health Care Needs Program: 2004



*Based upon the number of conditions recorded for each child.

Source: Child Health Intake Forms, Children with Special Health Care Needs Program, Washington State Department of Health

Number of Children in Special Education Services under the Individuals with Disabilities Education Act (IDEA) Part B, as of December 1, 2004

Diagnostic Category	Number
Developmental Delay-Preschool	880
Serious Behavioral Disability	536
Orthopedic Impairment	37
Health Impairment	1,258
Specific Learning Disability	3,113
Mental Retardation	364
Multiple Disabilities	170
Deaf	45
Hearing Impairment	51
Visually Impaired	7
Deaf-Blindness	*
Communication Disorder	1,619
Autism	352
Traumatic Brain Injury	25
Total	8,457

*Fewer than five or no cases reported.

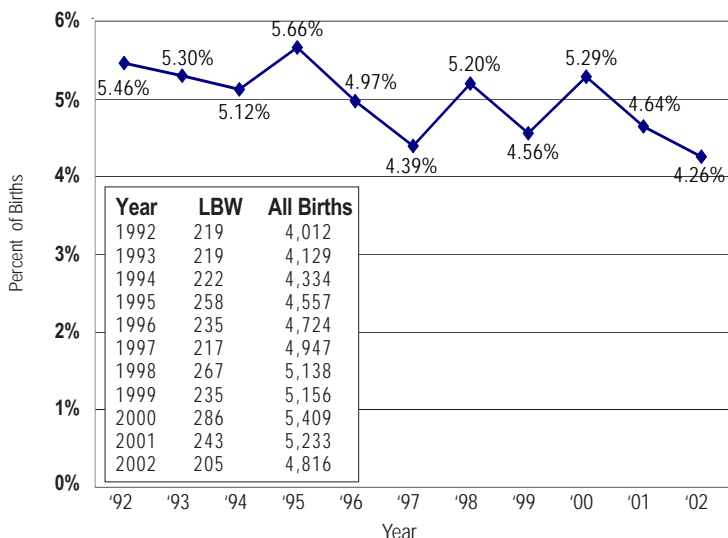
Source: Office of Superintendent of Public Instruction Special Education Operations IDEA Part B Child Count Report

Number of Children Age 0-35 Months with an Individualized Family Service Plan Who Received Early Intervention Services

Oct. 2002-Sept. 2003	449
Oct. 2003-Sept. 2004	534

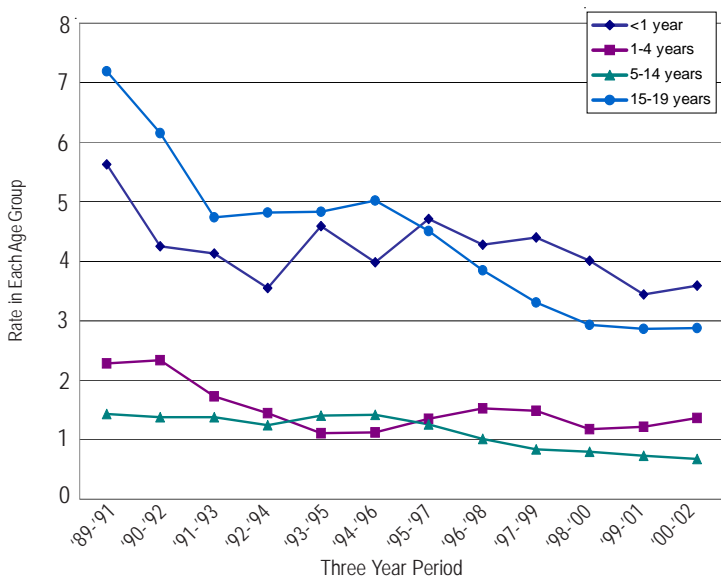
Source: Infant Toddler Early Intervention Program, Division of Developmental Disabilities, Department of Social and Health Services

Number and Percent of Babies Born with Low Birth Weight* (less than 2,500 grams)



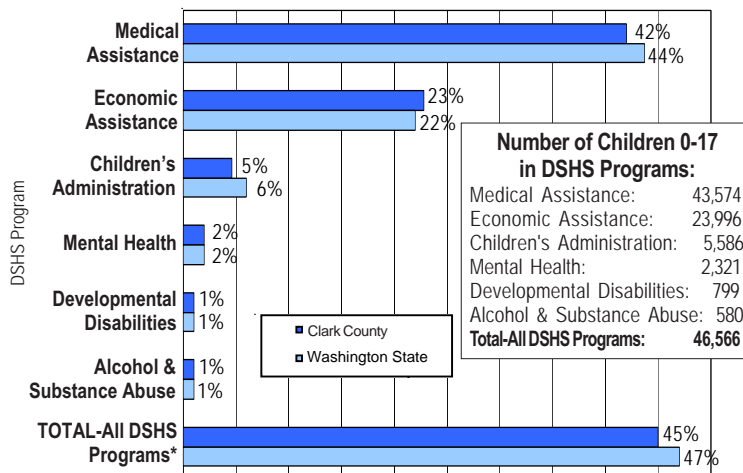
*Percent of births for which the birthweight is known.
Source: VistaPHw 5.0

Age-Specific Hospitalization Rate* for Chronic Conditions per 1,000 Children Ages 0-19



*Number of hospitalizations per 1,000 population of children in each age group calculated as three-year rolling averages.
Source: VistaPHw 5.0

Percent of Children Age 0-17 in Programs of the Department of Social and Health Services: July 2002 - June 2003

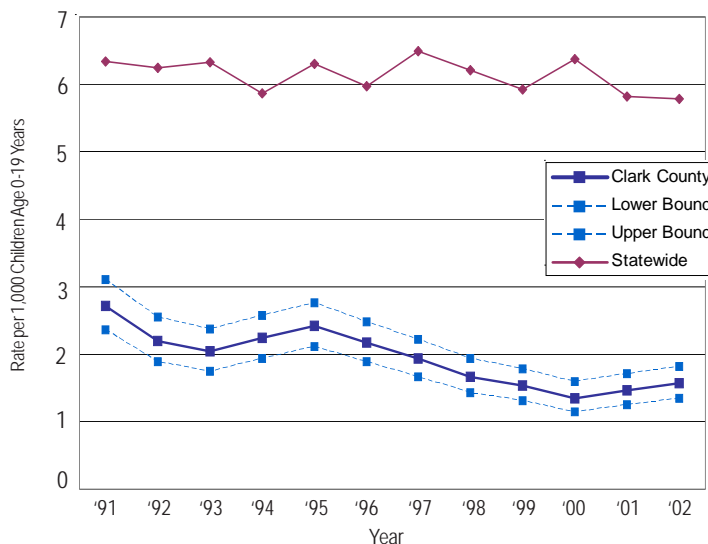


Number of Children 0-17 in DSHS Programs:

Medical Assistance:	43,574
Economic Assistance:	23,996
Children's Administration:	5,586
Mental Health:	2,321
Developmental Disabilities:	799
Alcohol & Substance Abuse:	580
Total-All DSHS Programs:	46,566

* Based upon unduplicated count of children within each service category.
Source: Client Services Database, Research and Data Analysis Division, Department of Social and Health Services

Hospitalization Rate* for Chronic Conditions per 1,000 Children Age 0-19 Years: County Rate Compared to State Rate



*Number of hospitalizations per 1,000 population of children 0-19.
Source: VistaPHw 5.0
Upper and lower bounds refer to the upper and lower range of the 95% confidence interval within which the actual rate lies.

This county profile is part of the Children and Youth with Special Health Care Needs: Washington State Report. For more information, contact the Children with Special Health Care Needs Program at (360) 236-3571, or <http://www.doh.wa.gov/cfh/mch/cshc/home2.htm>

