

# Penn Cove

## Annual Shellfish Growing Area Review



Prepared By: Merita Trohimovich

Area: Penn Cove

Year Ending: December 31, 2023

Classification: Conditionally Approved, Prohibited

### Activities in the Growing Area in 2023

The growing area was sampled six times in accordance with the National Shellfish Sanitation Program (NSSP) Systematic Random Sampling criteria. Annual Conditional Approved Area Management Plan (CAAMP) evaluations of the Penn Cove Park and Coupeville WWTPs were completed. No changes to the classification or the CAAMP were needed. Evaluation reports are in the central growing area file. All the growing area was closed for one day due to the predicted condition of the Skagit River exceeding 30.3 ft. The Skagit River did not reach 30.3 ft as predicted and the growing area was opened immediately.

The City of Coupeville received a National Estuary Program grant to evaluate the feasibility of adding stormwater treatment facilities to stormwater outfalls within the town limits of Coupeville which is being implemented after delays partly due to the COVID-19 pandemic.

### Analytical Results of Water Samples

Table 1 summarizes the results of the last 30 samples collected from the area. This summary shows that all stations pass the NSSP water quality standard.

### Change in Actual Pollution Sources that Impact the Growing Area

We currently have no information indicating that the area has new sources of pollution.

### Classification Status

- Well within the classification standards
- Meets standards, but threatened with downgrade in classification
- Fails to meet current classification standards

### Remarks and Recommendations

Table 1 shows that all stations meet the NSSP water quality standard for an Approved classification and the area is correctly classified.

## Management Plan Evaluation

1. Have all parties involved complied with the conditions of the management plan..... Yes
2. Has reporting been adequate to manage the conditional area..... Yes
3. Does the area consistently meet approved area criteria when it is open for harvest ..... Yes
4. Has a field inspection of critical pollution sources been conducted..... Yes

**TABLE 1. Summary of Marine Water Data (SRS) for the Penn Cove Growing Area**

Sampling Event Type: Regulatory

Maximum Number of Samples: 30

Tides Included: All

Station Number	Classification	Date Range	Range (FC/100mL)	Geomean (FC/100mL)	Est. 90 <sup>th</sup> Percentile (FC/100mL)	Meets Standard
206	Conditionally Approved	9/23/2019-11/13/2023	1.7-11.0	2.0	3.3	Y
207	Conditionally Approved	9/23/2019-11/13/2023	1.7-6.8	2.0	3.4	Y
208	Conditionally Approved	9/23/2019-11/13/2023	1.7-9.3	2.0	3.5	Y
209	Conditionally Approved	9/23/2019-11/13/2023	1.7-240.0	3.0	15.3	Y
210	Conditionally Approved	9/23/2019-11/13/2023	1.7-13.0	2.3	4.8	Y
215	Conditionally Approved	10/21/2019-11/13/2023	1.7-6.8	2.0	3.3	Y
217	Conditionally Approved	9/23/2019-11/13/2023	1.7-7.8	2.1	3.5	Y
218	Conditionally Approved	9/23/2019-11/13/2023	1.7-11.0	2.1	4.0	Y
220	Conditionally Approved	9/23/2019-11/13/2023	1.7-33.0	2.1	4.5	Y
221	Conditionally Approved	9/23/2019-11/13/2023	1.7-4.5	1.8	2.2	Y
279	Conditionally Approved	9/23/2019-11/13/2023	1.7-7.8	2.0	3.2	Y
321	Conditionally Approved	9/23/2019-11/13/2023	1.7-7.8	1.9	3.1	Y
202	Prohibited	9/23/2019-11/13/2023	1.7-11.0	2.0	3.3	Y
204	Prohibited	8/19/2019-11/13/2023	1.7-7.8	2.4	4.7	Y
205	Prohibited	9/23/2019-11/13/2023	1.7-23.0	2.4	2.8	Y
211	Prohibited	9/23/2019-11/13/2023	1.7-11.0	2.1	3.7	Y
212	Prohibited	9/23/2019-11/13/2023	1.7-220.0	2.8	11.3	Y
216	Prohibited	9/23/2019-11/13/2023	1.7-7.8	1.9	3.1	Y
219	Prohibited	9/23/2019-11/13/2023	1.7-46.0	2.3	5.8	Y

The standard for approved shellfish growing waters is fecal coliform geometric mean not greater than 14 organisms/ 100 mL with an estimated 90th percentile not greater than 43 organisms/ 100 mL. The above table shows bacteriological results in relation to program standards.

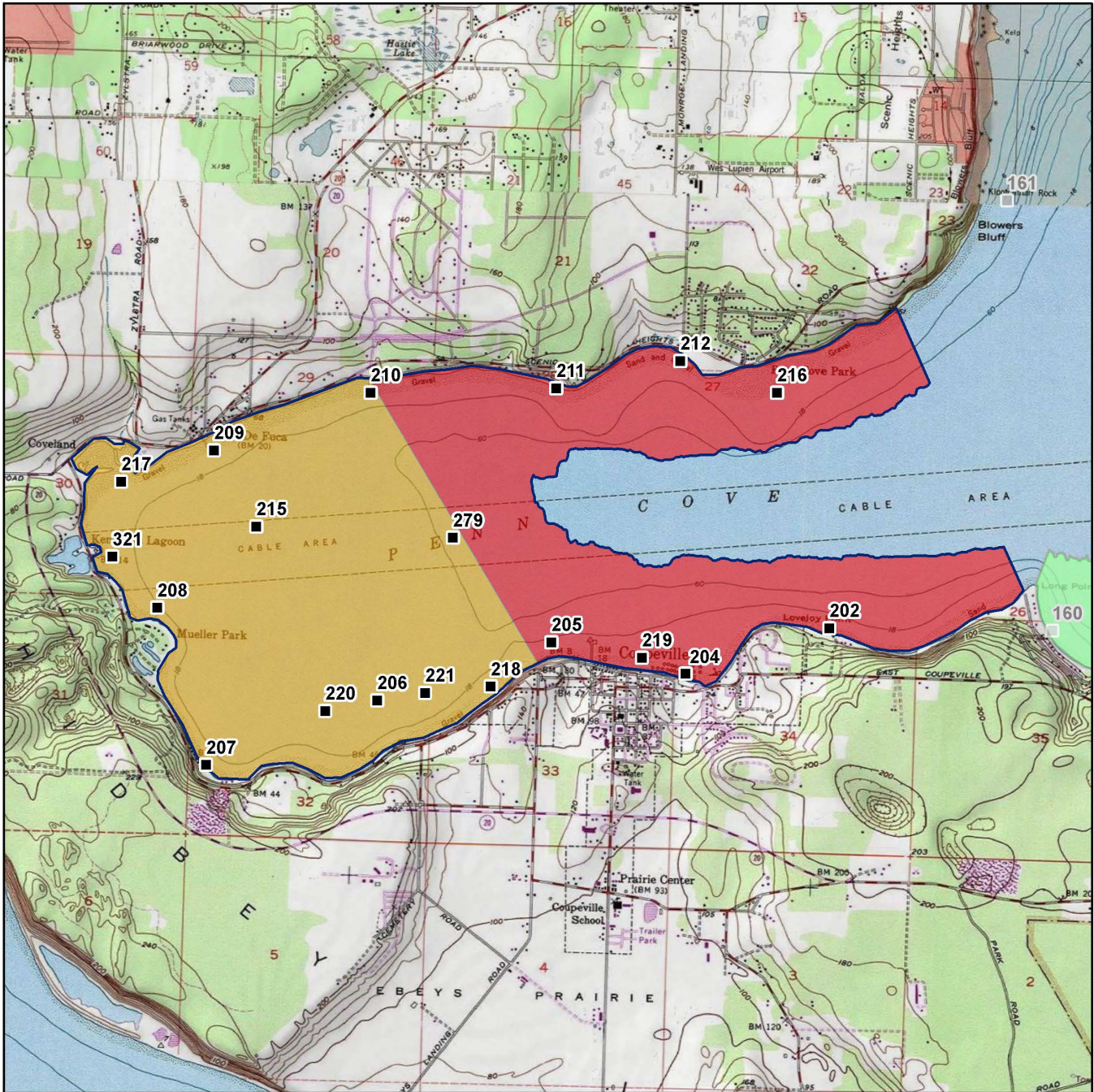
MAP 1. Penn Cove Growing Area

 Penn Cove



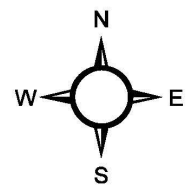
Date Updated: 7/11/2018

0 1 2 Miles



**Classification      Sampling Stations**

-  Approved
-  Conditional
-  Prohibited
-  Restricted
-  Unclassified



\* Some sampling stations are highlighted with grey box for ease of reading.