

# Padilla Bay

## Annual Shellfish Growing Area Review



Prepared By: Liz Maier

Area: Padilla Bay

Year Ending: December 31, 2023

Classification: Approved, Prohibited

### Activities in the Growing Area in 2023

The growing area was sampled six times in accordance with the National Shellfish Sanitation Program (NSSP) Systematic Random Sampling criteria.

Skagit County received National Estuary Program (NEP) funding for pollution identification and correction work, a human and agricultural tracer study, a social marketing project, and enhancing their septic operations and maintenance program. Washington State Department of Agriculture (WSDA) and Washington State Department of Ecology (Ecology) received NEP funding for enhanced water compliance monitoring and referral and technical assistance, with WSDA focusing on dairies and Ecology addressing nonpoint pollution stemming from nondairy agriculture. Washington State University Extension and the Skagit Conservation District received NEP funding to provide education and outreach resources and technical assistance to agricultural landowners.

### Analytical Results of Water Samples

Table 1 summarizes the results of the last 30 samples collected from the area. This summary shows that all stations pass the NSSP water quality standard.

### Change in Actual Pollution Sources that Impact the Growing Area

We currently have no information indicating that the area has new sources of pollution.

### Classification Status

- Well within the classification standards
- Meets standards, but threatened with downgrade in classification
- Fails to meet current classification standards

### Remarks and Recommendations

Table 1 shows that all stations meet the NSSP water quality standard for an Approved classification and the area is correctly classified.

**TABLE 1. Summary of Marine Water Data (SRS) for the Padilla Bay Growing Area**

Sampling Event Type: Regulatory

Maximum Number of Samples: 30

Tides Included: All

Station Number	Classification	Date Range	Range (FC/100mL)	Geomean (FC/100mL)	Est. 90 <sup>th</sup> Percentile (FC/100mL)	Meets Standard
323	Approved	11/13/2018 - 12/13/2023	1.7 - 33.0	2.7	9.4	Y
324	Approved	2/27/2019 - 12/13/2023	1.7 - 23.0	2.5	6.5	Y

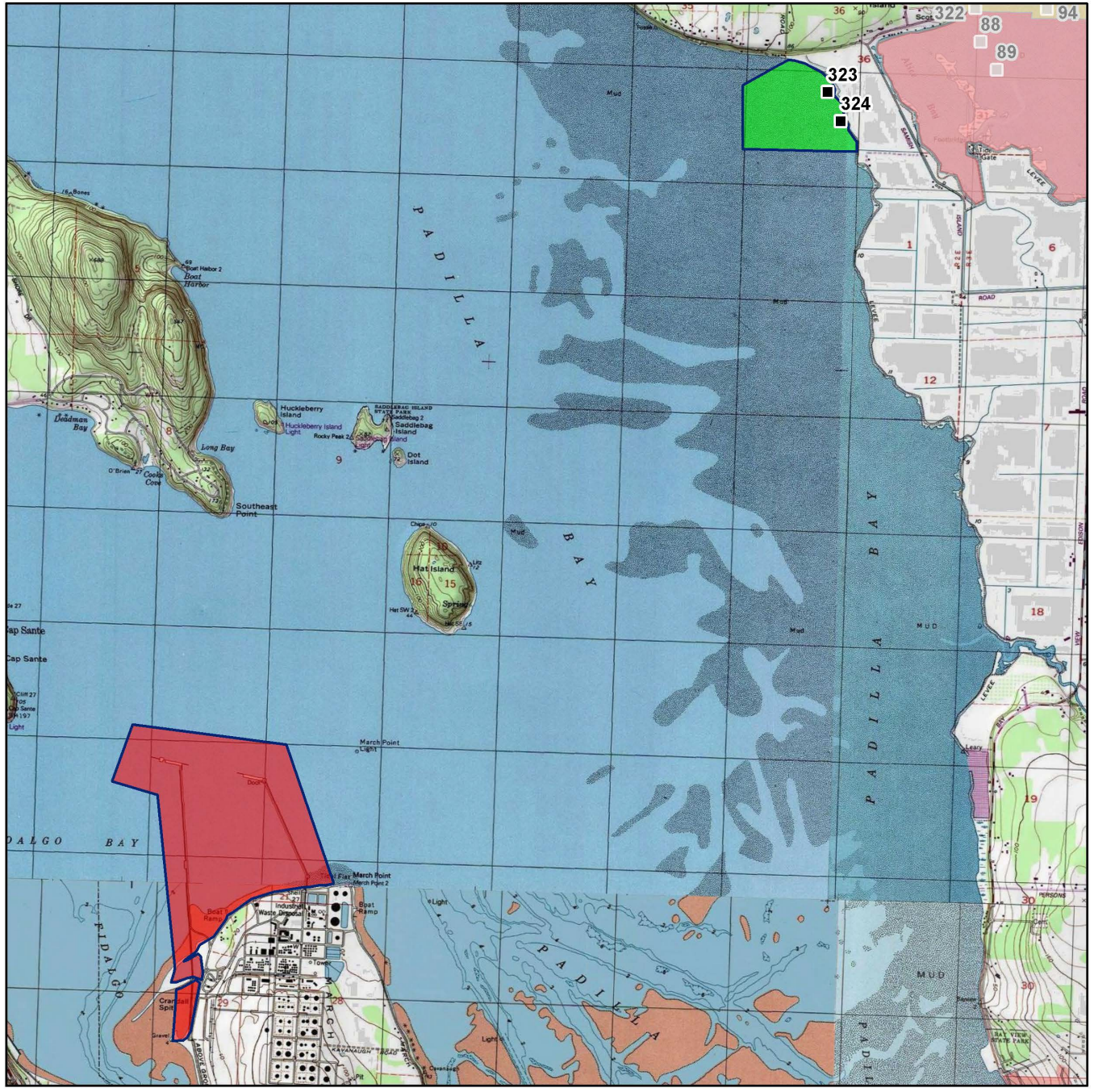
The standard for approved shellfish growing waters is fecal coliform geometric mean not greater than 14 organisms/ 100 mL with an estimated 90th percentile not greater than 43 organisms/ 100 mL. The above table shows bacteriological results in relation to program standards.

**MAP 1. Padilla Bay Growing Area**

 Padilla Bay

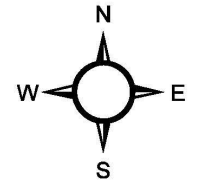


  
 Washington State Department of  
**Health**  
 Date Updated: 7/11/2018



- Classification**
- Approved
  - Conditional
  - Prohibited
  - Restricted
  - Unclassified

- Sampling Stations**
- 



\* Some sampling stations are highlighted with grey box for ease of reading.